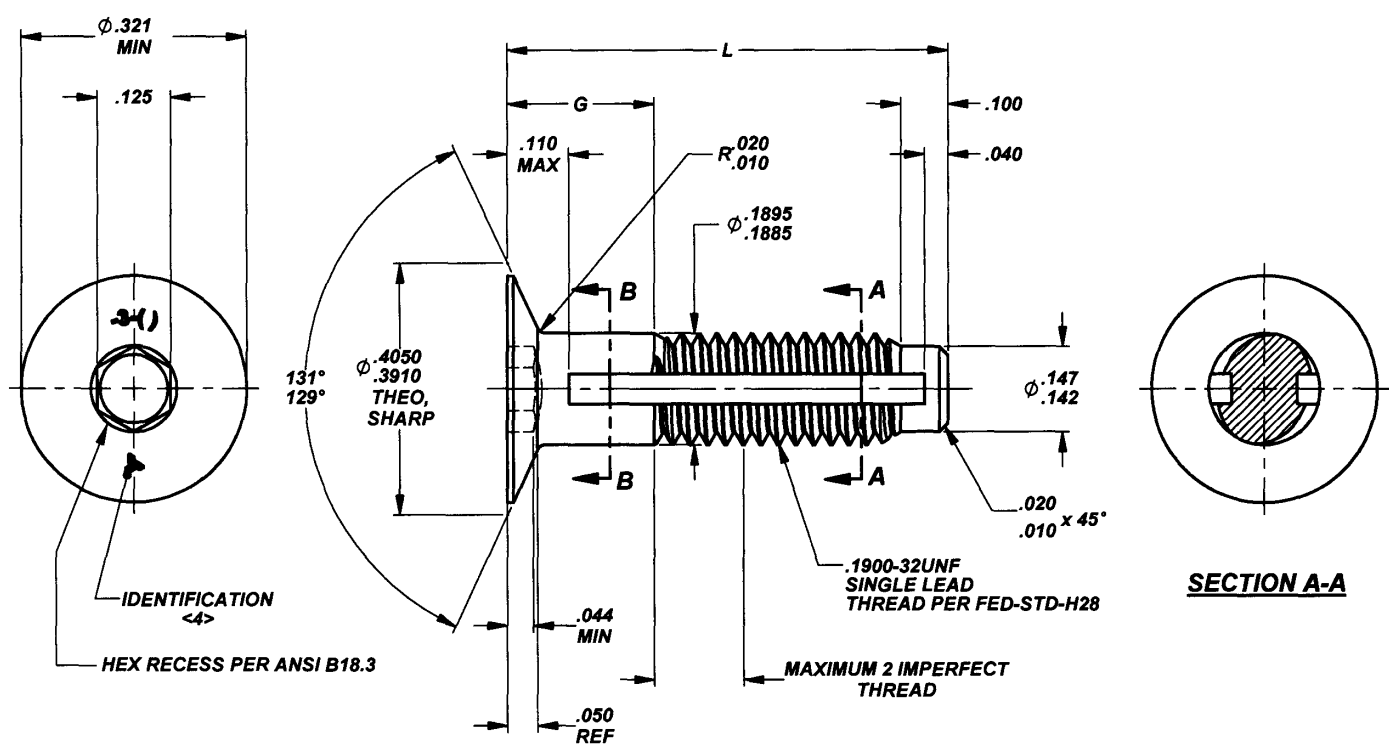


MANUFACTURE OF THE PROPRIETARY PARTS SHOWN HERE WITHOUT WRITTEN CONSENT IS ABSOLUTELY PROHIBITED



**SECTION A-A**

**TABLE 1**

DASH NUMBER	GRIP RANGE		G	L
	MINIMUM	MAXIMUM		
-0	.093	.124	.124	.645
-1	.125	.187	.187	.708
-2	.188	.250	.250	.771
-3	.251	.312	.312	.834
-4	.313	.375	.375	.897
-5	.376	.437	.437	.950
-6	.438	.500	.500	1.023
-7	.501	.652	.562	1.086
-8	.563	.625	.625	1.149
-9	.626	.687	.687	1.212
-10	.688	.750	.750	1.275

**TABLE 2 <7>**

MATERIAL	ULTIMATE TENSILE STRENGTH MINIMUM (CALCULATED)	ULTIMATE SHEAR STRENGTH MINIMUM ACROSS A-A (CALCULATED)	ULTIMATE SHEAR STRENGTH MINIMUM ACROSS B-B (CALCULATED)
300 SERIES CRES	1,200 LBS.	718 LBS.	980 LBS.
A286 CRES	1,750 LBS.	1,450 LBS.	1,970 LBS.

THIS DRAWING EMBODIES A CONFIDENTIAL, PROPRIETARY DESIGN & ALL DESIGN, MANUFACTURING PRODUCTION, USE & SALE RIGHTS REGARDING SAME ARE EXPRESSLY RESERVED.

INTERIM DOCUMENT REVISION		
Rev.	Date	DAF#
NEW 1	10/8/2018	117431

PROJECT NUMBER: 13PNL010

APPROVED DATE <b>14 NOV 13</b>	CURRENT DESIGN ACTIVITY: <b>ARCONIC</b> Arconic Fastening Systems	TITLE: <b>SCREW,                  130° HEAD, CAPTIVE, CRES                  SINGLE LEAD</b>	CURRENT DESIGN ACTIVITY: <b>CAGE CODE: 29372</b> <b>SALES DRAWING NO.</b>  <b>CA22085-3-()</b> SHEET 1 OF 2
REV. LETTER AND DATE <b>NEW 14 NOV 13</b>	TRIDAIR PRODUCTS 3000 W. LOMITA BLVD. TORRANCE, CA 90505	UNLESS OTHERWISE SPECIFIED DIMENSIONS ARE IN INCHES & ASME Y14.5M TOLERANCES: ANGLES = ±.3° DECIMALS .XX = ±.02 .XXX = ±.010	
DAF NUMBER <b>DAE 106352</b>			

S45306


MANUFACTURE OF THE PROPRIETARY PARTS SHOWN HERE WITHOUT WRITTEN CONSENT IS ABSOLUTELY PROHIBITED  
 THIS DRAWING EMBODIES A CONFIDENTIAL, PROPRIETARY DESIGN & ALL DESIGN, MANUFACTURING PRODUCTION, USE & SALE RIGHTS REGARDING SAME ARE EXPRESSLY RESERVED.

**NOTES; UNLESS OTHERWISE SPECIFIED:**

1. MATERIAL:
  - 1.1 300 SERIES CRES PER AMS-QQ-S-763.
  - 1.2 A286 CRES PER AMS5732 OR AMS 5737 OR AMS5731.
2. HEAT TREAT:
  - 2.1 SCREW: PER AMS2759 OR AMS5737 TO MEET MECHANICAL PROPERTIES (A286 CRES ONLY).
3. FINISH:
  - 3.1 PASSIVATED PER AMS2700.
  - 3.2 (OPTIONAL) BLACK OXIDE PER MIL-C-13924
- <4> IDENTIFICATION SHALL INCLUDE "TRIDAIR" NAME OR LOGO, FIRST AND SECOND DASH NUMBER RAISED OR DEPRESSED .010 MAXIMUM DEPTH. MARKING METHOD AND ORIENTATION OPTIONAL.
5. SCREW TO BE USED WITH CA21062-( )R RETAINING RING TO CAPTIVATE TO PANEL. SCREW MAY ALSO BE USED WITH CA21062-( )W WASHER OR CA21062-( )S SPACER AS AN ALTERNATE TO A COUNTERBORE IN THE TOP PANEL OR SUBSTRUCTURE FOR THE RETAINING RING.
6. FOR INSTALLATION INSTRUCTIONS PLEASE REFER TO CAL-STD-0140, SHEET 6.
- <7> THE MECHANICAL PROPERTIES SHOWN ARE CALCULATED VALUES. MECHANICAL PROPERTIES TESTING MAY NOT BE PERFORMED ON EACH PRODUCTION LOT.
8. PART NUMBER EXAMPLE:
  - 8.1 CA22085 - 3 - 4
    - L = .897, G = .375
    - NOMINAL SIZE (3/16)
    - 300 SERIES, PASSIVATED FINISH
    - BASIC PART NUMBER
  - 8.2 CA22085 B 3 - 4
    - 300 SERIES, BLACK OXIDE FINISH
  - 8.3 CA22085 C - 3 - 4
    - A286 CRES, PASSIVATED FINISH

INTERIM DOCUMENT REVISION		
Rev.	Date	DAF#
NEW	10/8/2018	117431

PROJECT NUMBER: 13PNL010

APPROVED DATE <b>14 NOV 13</b>	CURRENT DESIGN ACTIVITY:  <b>ARCONIC</b> Arconic Fastening Systems	TITLE: <b>SCREW,                  130° HEAD, CAPTIVE, CRES                  SINGLE LEAD</b>	CURRENT DESIGN ACTIVITY: <b>CAGE CODE: 29372</b>
REV. LETTER AND DATE <b>NEW 14 NOV 13</b>	TRIDAIR PRODUCTS 3000 W. LOMITA BLVD. TORRANCE, CA 90505	UNLESS OTHERWISE SPECIFIED DIMENSIONS ARE IN INCHES & ASME Y14.5M TOLERANCES:	SALES DRAWING NO.  <b>CA22085-3-()</b>
DAF NUMBER <b>DAF 100352</b>		ANGLES = ±3° DECIMALS .XX = ±.02 .XXX = ±.010	SHEET 2 OF 2

S45366